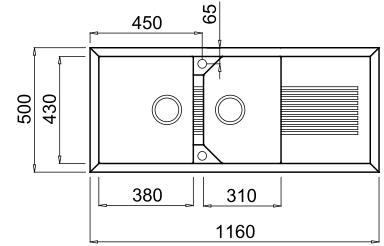
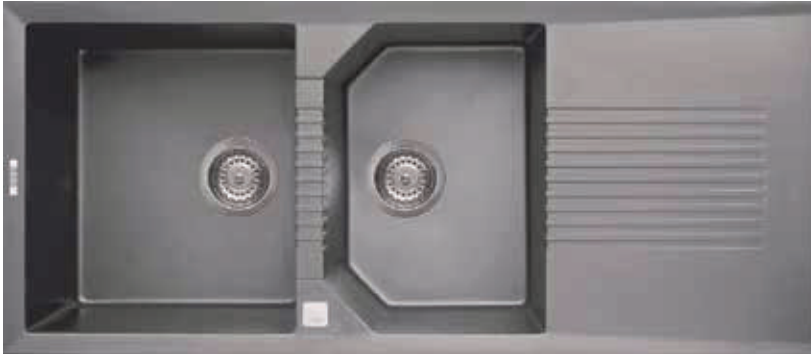


# TEKNO 500

Two-bowl sink with drainage area



## FEATURES

Dimensions (mm) **1160 x 500**  
 Built-in (mm) **1140 x 480**



## AVAILABLE MATERIALS AND COLOURS

### METALTEK GRANITE METALLIC EFFECT

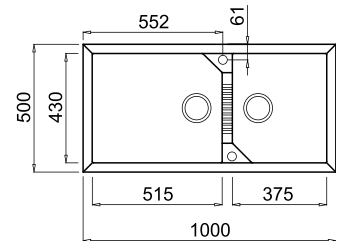
	M79 Aluminium	<b>LMT50079</b>
	M78 Espresso	<b>LMT50078</b>
	M73 Titanium	<b>LMT50073</b>
	M70 Ghisa	<b>LMT50070</b>

### GRANITEK NATURAL GRANITE EFFECT

	G68 Bianco	<b>LGT50068</b>		G40 Nero	<b>LGT50040</b>
	G62 Bianco Antico	<b>LGT50062</b>			
	G59 Antracite	<b>LGT50059</b>			
	G48 Cemento	<b>LGT50048</b>			
	G43 Tortora	<b>LGT50043</b>			

# TEKNO 490

Two-bowl sink



## FEATURES

Dimensions (mm) **1000 x 500**  
 Built-in (mm) **980 x 480**



## AVAILABLE MATERIALS AND COLOURS

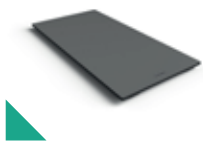
### METALTEK GRANITE METALLIC EFFECT

	M79 Aluminium	<b>LMT49079</b>
	M78 Espresso	<b>LMT49078</b>
	M73 Titanium	<b>LMT49073</b>
	M70 Ghisa	<b>LMT49070</b>

### GRANITEK NATURAL GRANITE EFFECT

	G68 Bianco	<b>LGT49068</b>		G40 Nero	<b>LGT49040</b>
	G62 Bianco Antico	<b>LGT49062</b>			
	G59 Antracite	<b>LGT49059</b>			
	G48 Cemento	<b>LGT49048</b>			
	G43 Tortora	<b>LGT49043</b>			

## ELEMENT



50 cm sliding element  
 Multifunctional chopping  
 board of HPL  
 Code  
**ATH010\_**  
 Page 157



Pop-Up Element  
 2-way and 1-way Push-  
 Control  
 Code  
 2-way **ASP23002**  
 1-way **ASP13002**  
 Page 161

## CHOPPING BOARD



Sliding glass chopping  
 board  
 Code  
**ATV01000**

07